

CROI ICAR

CROI Affiliated Event for
Italian Young Investigators

AWARDS 2024



CHAIRS:

F. Kirchhoff

(Ulm, Germany, EU)

D. Margolis

(Chapel Hill, North Carolina, USA)



Denver, Colorado

March 4th, 2024

h 06.00 - 07.30 pm

CROI 31st CONFERENCE ON
Retroviruses and Opportunistic Infections
MARCH 3-6 2024 DENVER, COLORADO

ICAR 16th NATIONAL CONGRESS
Italian Conference on AIDS and Antiviral Research
JUNE 19-21 ROME, ITALY

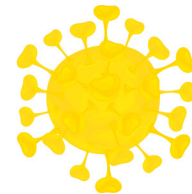


CROI ICAR

AWARDS 2024

CROI Affiliated Event for
Italian Young Investigators

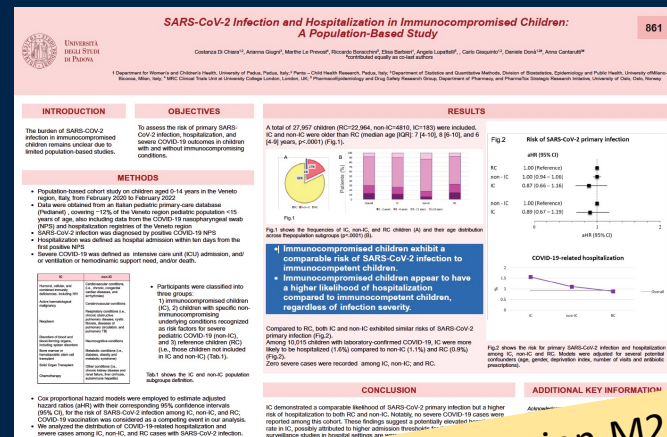
CHAIRS: F. Kirchhoff (Ulm, Germany, EU), D. Margolis (Chapel Hill, North Carolina, USA)



SARS-CoV-2 Infection and Hospitalization in Immunocompromised Children: A Population-Based Study

Costanza Di Chiara, Giugni A., Le Prevost M., Boracchini R.,
Barbieri E., Lupattelli A., Giaquinto C., Donà D., Cantarutti A.

on behalf of the VERDI study team



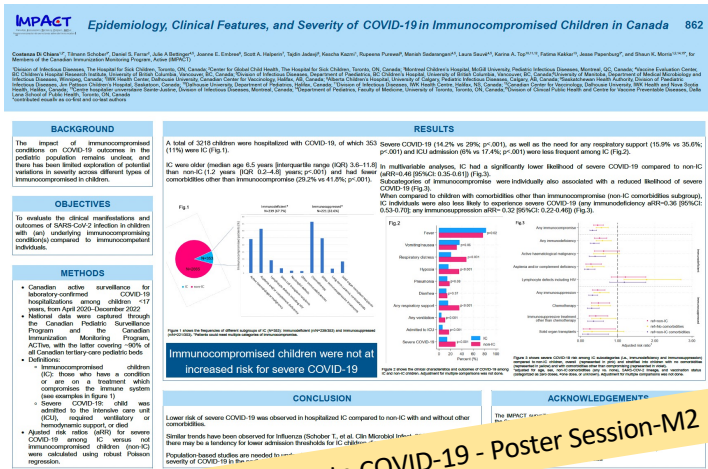
#861 - Poster Session-M2

Background

Conflicting evidence exists on COVID-19 incidence and severity in immunocompromised (IC) children



- What is the risk of SARS-CoV-2 infection in IC kids?
- Is IC status a risk factor for severe COVID-19 in kids?



#862 - Factors Affecting Outcome of Acute COVID-19 - Poster Session-M2



Study objectives

To assess the incidence and severity of SARS-CoV-2 infection in immunocompromised children.

We evaluated the risk of:

- SARS-CoV-2 primary infection
- COVID-19-related hospitalization
- Severe COVID-19 outcomes

in children **with or without** an **immunocompromising status**



Study design and methods

Study design and Data Sources

- Population-based cohort study
- Real-world data from electronic medical registries in Italy and Norway
- Children aged 0-18 years
- Data collected from February 2020 to February 2022



Study design and methods

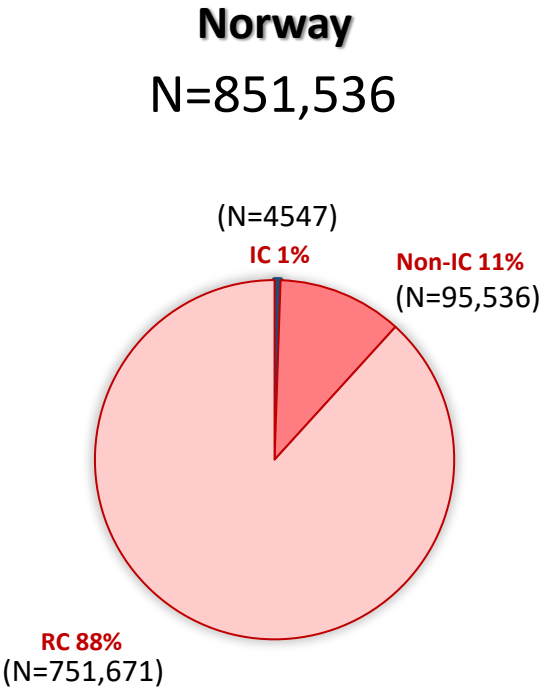
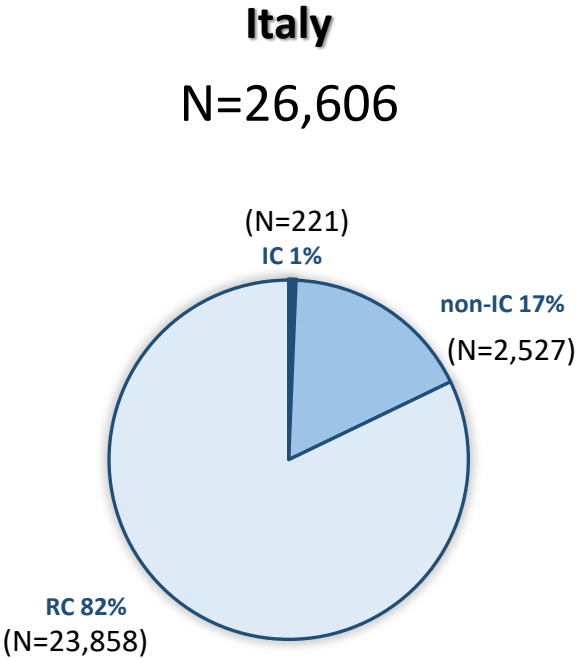
Definitions

- Severe COVID-19: ICU admission, and/or ventilation or hemodynamic support need, and/or death
- Participants were classified into three groups:
 - IC:** Immunocompromised children (see table)
 - non-IC:** Children with specific non-immunocompromising underlying conditions recognized as risk factors for severe pediatric COVID-19 (e.g., diabetes, obesity, etc)
 - RC:** Reference children (i.e., neither IC nor non-IC)

IC	non-IC
Humoral, cellular, and combined immunity deficiencies, including HIV	Cardiovascular conditions, (i.e., chronic, congenital cardiac diseases, and arrhythmias)
Active haematological malignancy	Cerebrovascular conditions
Neoplasm	Respiratory conditions (i.e., chronic obstructive pulmonary disease, cystic fibrosis, diseases of pulmonary circulation, and pulmonary TB)
Disorders of blood and blood-forming organs, including spleen disorders	Neurocognitive conditions
Bone marrow or hematopoietic stem cell transplant	Metabolic conditions (i.e., diabetes, obesity and metabolic syndrome)
Solid Organ Transplant	Other conditions (i.e., chronic kidney disease and renal failure, liver cirrhosis, autoimmune hepatitis)
Chemotherapy	



Results – cohorts' characteristics



■ Italy ■ Norway

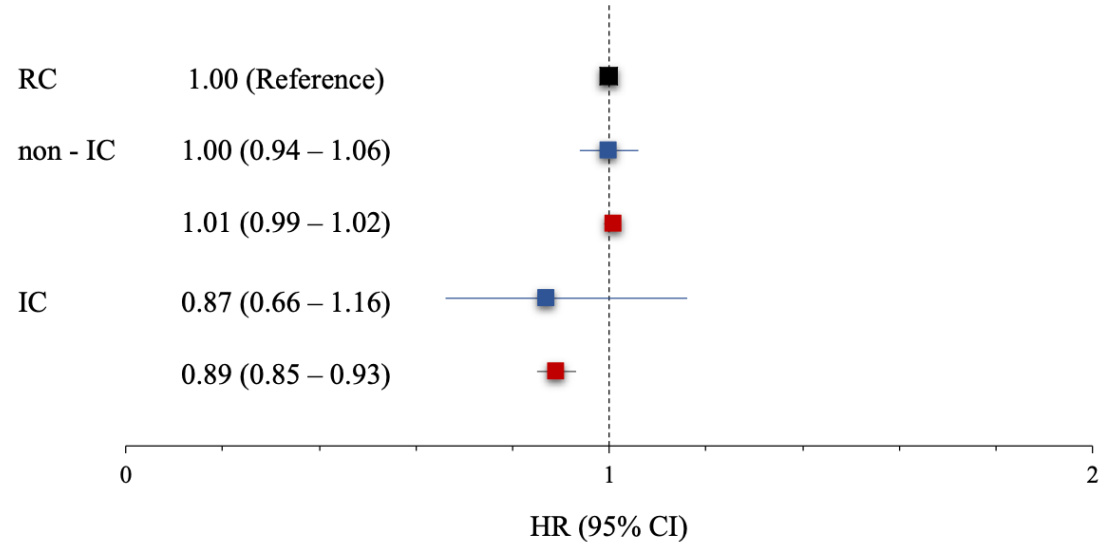


Results – Risk of SARS-CoV-2 infection

■ Italy ■ Norway

IC children showed **comparable or lower risk of SARS-CoV-2 infection** to immunocompetent children

Risk of SARS-CoV-2 primary infection



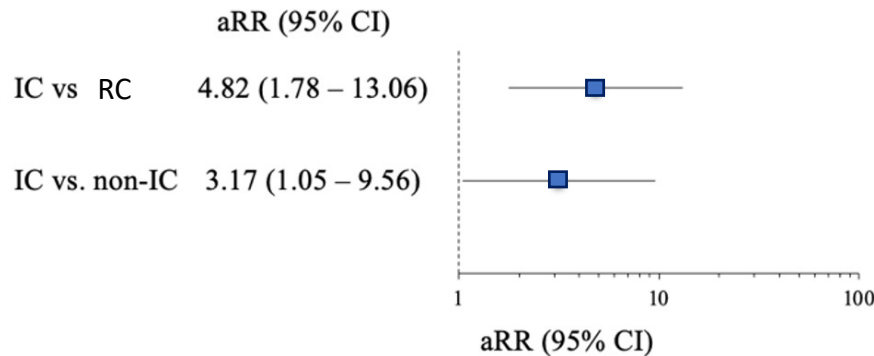
Models were adjusted for several potential confounders (age, gender, deprivation index, number of visits and antibiotic prescriptions). COVID-19 vaccination was considered as a competing event in our analysis.



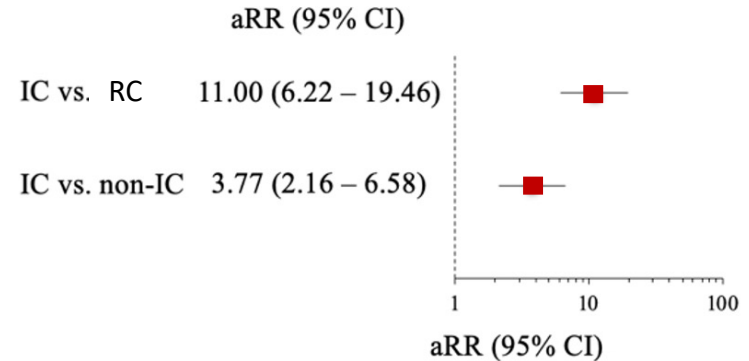
Results – Risk of hospitalization

IC children had a **4-11-fold higher risk of hospitalization** compared to immunocompetent children without other risk factors, regardless of infection severity

■ Italy COVID-19 cases = 14,968



■ Norway COVID-19 cases = 375,896



Zero and five cases developed severe COVID-19 in Italy and Norway, respectively.



Conclusions

- Data from Italy and Norway are in general comparable
- IC children showed a **comparable / lower risk of SARS-CoV-2 primary infection** but a **higher risk of hospitalization** compared to both non-IC and RC
- Notably, severe COVID-19 cases were very rare in both datasets
- Lower risk of infection IC may be related to a reduced exposure (e.g. higher isolation measures) and/or higher vaccine acceptance
- Higher hospitalization rate in IC may be due to **lower admission thresholds**
- The higher risk of hospitalization in IC did not translate into higher rate of COVID-19 severity.



Acknowledgments



UNIVERSITÀ
DEGLI STUDI
DI PADOVA



Penta
Child Health Research



This work is part of the VERDI project (grant no. 101045989), which is funded by the European Union.



UNIVERSITY
OF OSLO



Thank you!

costanza.dichiara@unipd.it



@C_DiChiara_MD



costanza-dichiara



CROIICAR

CROI Affiliated Event for
Italian Young Investigators

AWARDS2024

